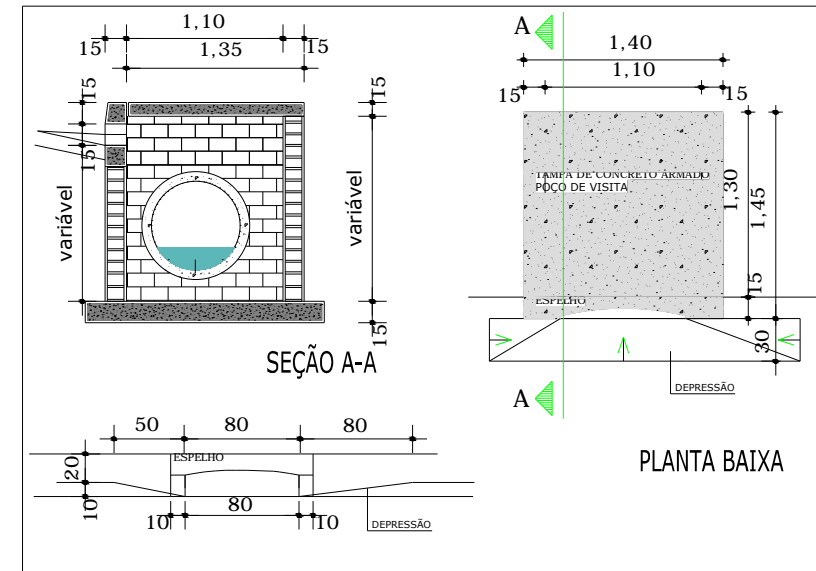


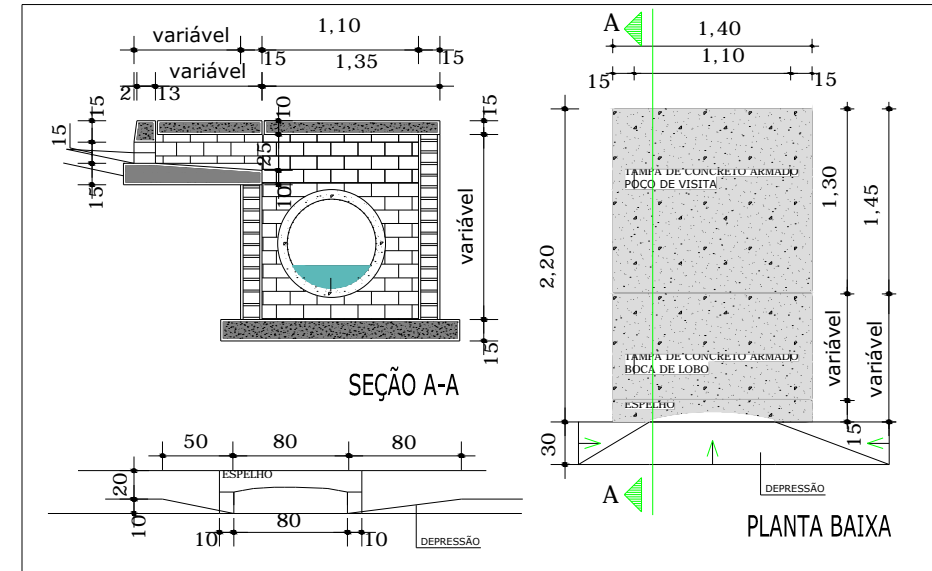
DRENAGEM PLUVIAL EXISTENTE

ESCALA: 1:500

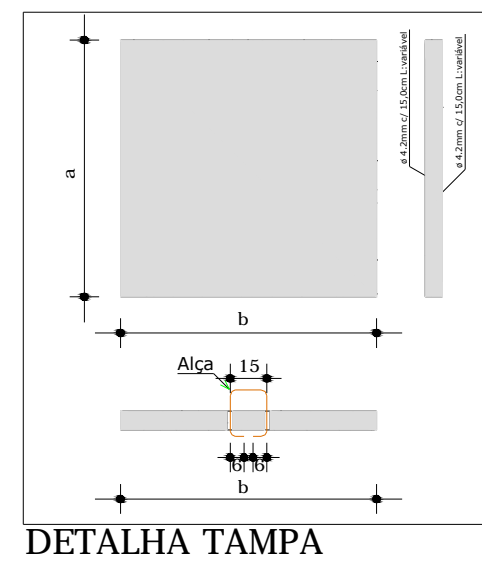
ÁREA TOTAL DE PROJETO: 2.769,00 m²



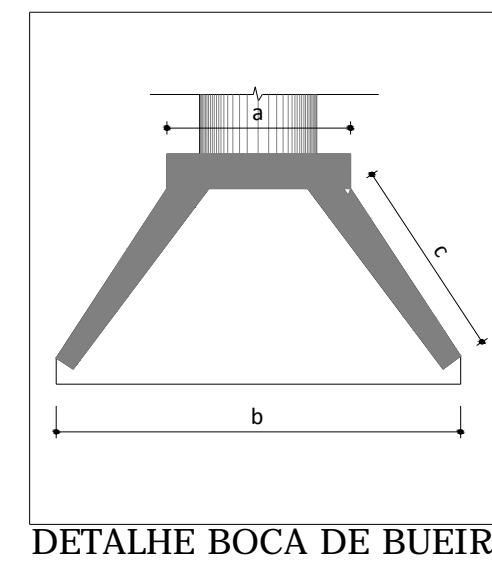
DETALHE POÇO DE VISITA



DETALHE POÇO DE VISITA/BOCA DE LOBO



DETALHA TAMPA

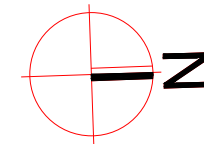
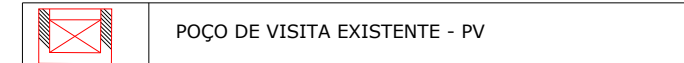


DETALHE BOCA DE BUEIRO

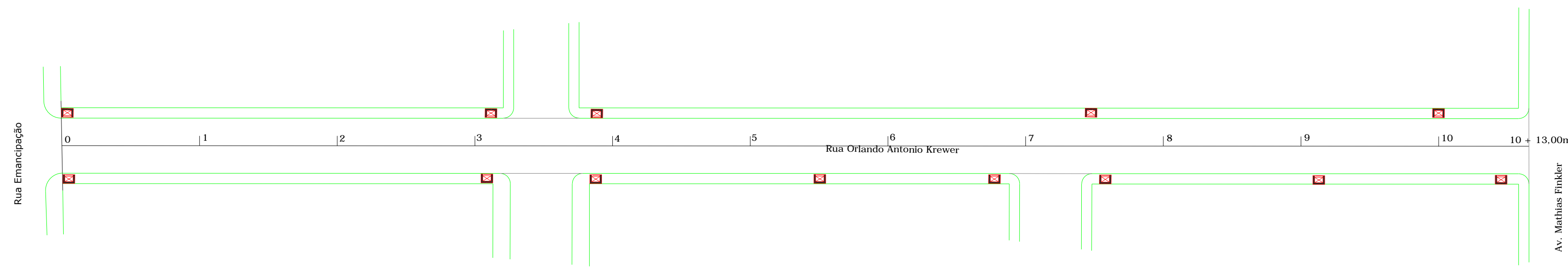
POÇO DE VISITA	BOCA DE BUEIRO - BB
PVØ40 - 1,0X1,0X1,4 m	a / b x c x h
PVØ60 - 1,1X1,1X1,4 m	BBØ60 - 1,1/2,0X0,65X1,2 m
PVØ80 - 1,3X1,3X1,5 m	BBØ80 - 1,3/2,6X0,85X1,4 m
PVØ100 - 1,5X1,5X1,5 m	BOCA DE LOBO
	BL - 1,0XVAR.X0,5 m

PS2 PB - TUBO CONCRETO SIMPLES
PA-2 PB - TUBO CONCRETO ARMADO

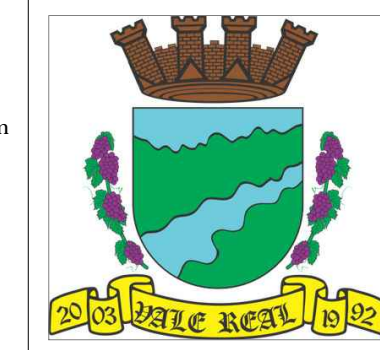
LEGENDA:



RUA ORLANDO ANTONIO KREWER
Vale Real - RS
Extensão: 213,00m
Largura de Pista: 8,00m
Largura do Passeio: 2,50m



PROJETO: PAVIMENTAÇÃO DA RUA ORLANDO ANTÔNIO KREWER	ÁREA: 2.769,00m ²
LOCAL: VALE REAL - RS	ESCALA: 1/500
PROPRIETARIO : PREFEITURA MUNICIPAL DE VALE REAL	DATA: SET/ 2017



GILMAR ADEMIR WEGNER

Eng. Civil - Crea RS 46995-D

EDSON KASPARY

Prefeito Municipal

PRANCHA : DRENAGEM PLUVIAL EXISTENTE